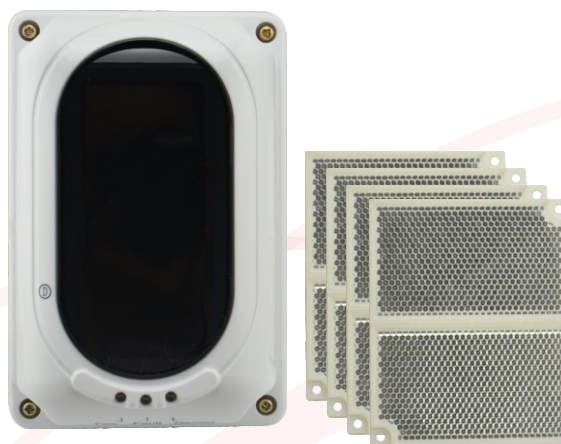


# Beam Smoke Detector

## AW-BK901 Infrared Linear Reflex Beam Smoke Detector

### Profile

The AW-BK901 infrared linear reflex beam smoke detector, being designed for fire prevention in the open area, is a long interval one and used with the fire alarm controller. The detector is made up of the combination unit of the emitter and the receiver as well as the reflecting mirror. The signal issued by the emitter enters into the receiver after reflection by the reflector.



## AW-BK901

### Characters

- Unit the emitter and the receiver as one. In that case, it has advantages of easy and convenient installation as well as wonderful collimation for the optical path.
- Automatic calibration to make sure one person can debug the device easily.
- Self-testing function to monitor the internal fault of the detector.
- Automatic compensation for the factors of the receiving signals to avoid the influence of dust pollution, positional deviation and aging of transmitter tubes.
- The detector is designed for optical path, strong anti-jamming capability, seal design and reliable anti-corrosion and water-proof.

### Size Details

Length: 206mm; Width: 94mm; Thickness: 135mm

### Parameters

#### Operating Environment

- Power supply voltage: 16V~28VDC
- Debug current:  $\leq 20\text{mA}$
- Monitoring current:  $\leq 12\text{mA}$
- Alarm current:  $\leq 22\text{mA}$
- Overall power consumption:  $< 3\text{W}$
- Use conditions:
  - Temperature:  $-10^{\circ}\text{C}\sim+50^{\circ}\text{C}$
  - Relative humidity:  $\leq 95\%$
- Protective area:
  - The maximum protective area of the detector is  $1400\text{ m}^2$  ( $14\times 100=1400\text{ m}^2$ ) and the maximum width is 14m.

#### Order Information

- AW-BK901-25 25 meters with 1 reflector
- AW-BK901-40 40 meters with 1 reflector
- AW-BK901-70 70 meters with 4 reflectors
- AW-BK901-100 100 meters with 4 reflectors