



6502/G+

12327402

INSTALLER MANUAL



INDEX

1. Safety cautions and warnings	3
2. Specifications.....	3
3. Panel description	3
4. Panel installation	4
5. Initial configuration	5
6. Initial alternative configuration through web client.....	6
7. Settings.....	8
8. System operation	9
9. Installation diagram	10

1. SAFETY CAUTIONS AND WARNINGS

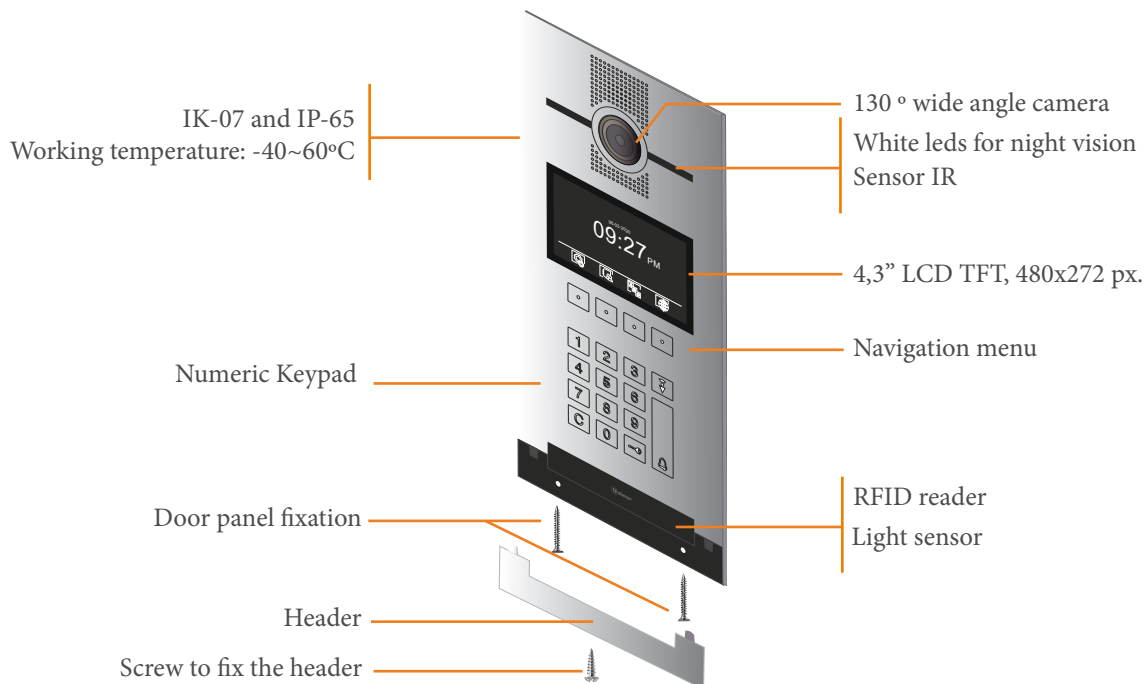
- The installation and setup of this equipment must be done by an authorized installer.
- The current regulations oblige to protect the power supply by means of a thermal magnetic circuit breaker.
- All the installation conduits must distance at least 40 cm from any other installation.
- In regards of the power supply FA-G+:
 - Do not tight with excessive strength the screws of the terminal block at FA-G+ power supply.
 - Install the power supply in a dry and secure area, protected against water drops.
 - Avoid placing the power supply close to heating sources, humid or dusty areas.
 - Do not cover the power supply ventilation openings area to assure air flow circulation.
 - To prevent damages, the power supply has to be strongly mounted. Use a DIN rail 46277 (8 DIN) to fix it.
 - To avoid an Electrical shock, do not remove the protection cover and do not manipulate the cables connected to the power terminals.

2. SPECIFICATIONS

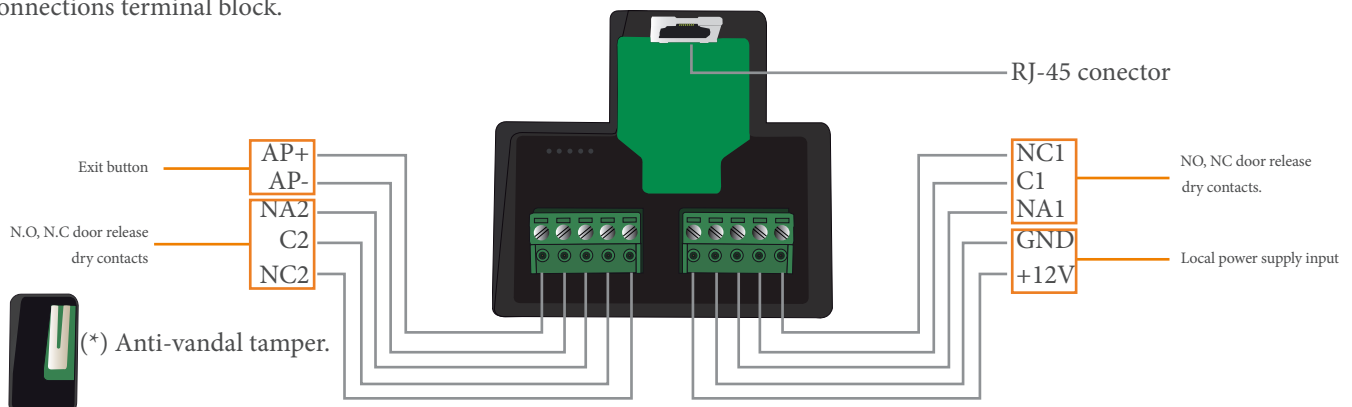
- TCP/IP video intercom system with technology IP-G+.
- Installation over existing ethernet network (D4L-G+/POE are required).
- Up to 98 blocks in one system.
- Up to 19 entry panels at each block.
- Up to 19 general panels at each installation.
- Up to 799 flats per each block.
- Up to 19 guard units for the general compound and 9 guard units at each block.

3. PANEL DESCRIPTION

- Front



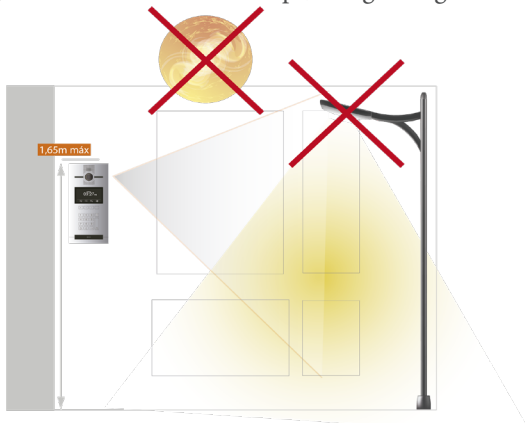
- Connections terminal block.



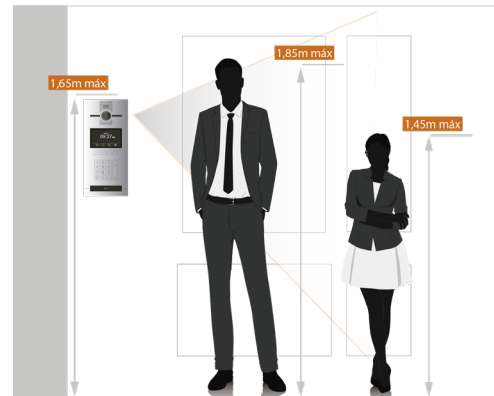
(**) In case to power the panel with a local power supply, the ethernet cable cannot be connected to a PoE output of the distributor D4L-G+.

4. PANEL INSTALLATION

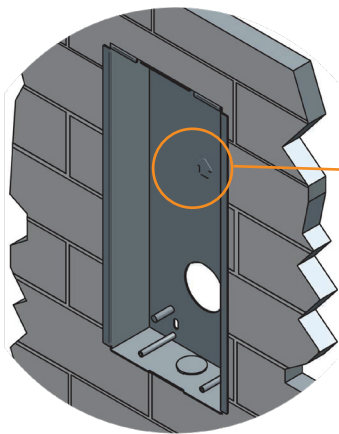
1 - Avoid locating the panel exposed to direct sun light or external light sources like streetlamps, to get a good image.



2- Locate the top part of the entry panel at 1,65m height from ground.

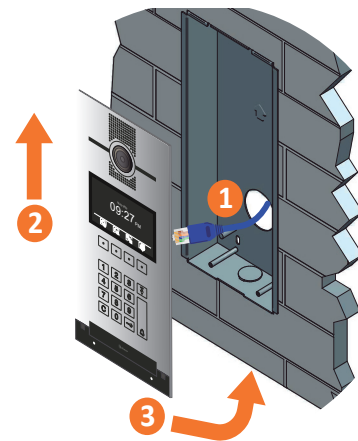


3- Make a hole in the wall where to fit the embedding box CE-6502/G+. The dimensions of the hole are 128(W) x 306 (H) x 44 (D). Assure the box is fixed upside correctly.

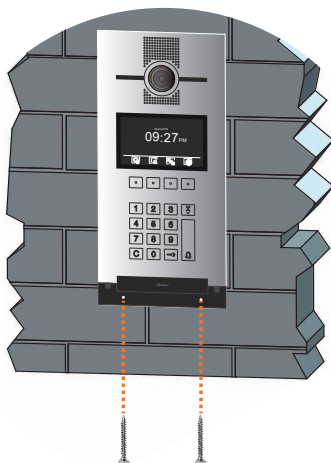


Mind the embedding box orientation.
It is recommended to flow the instructions and tips mentioned in the embedding box mount guide: (<https://bit.ly/3incuSb>)

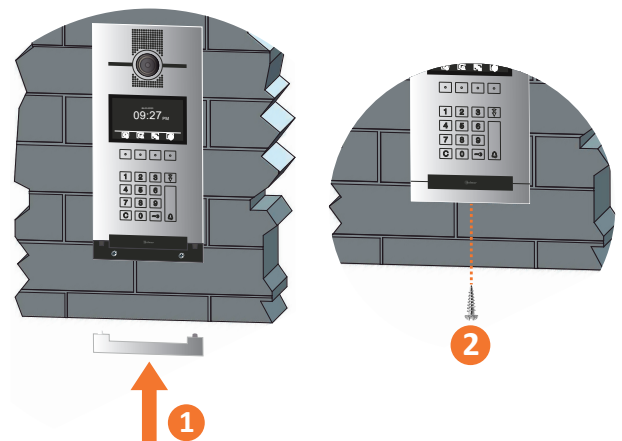
4- Connect the ethernet cable (1) and hang the upper part of the panel in the nails which protrude out of the box (2), then tilt the panel to fit into the bottom part of the box.



5- Fix the bottom part of the panel using the screws supplied.



6- Slide up the header supplied, to cover the bottom part of the panel and tight the screws underneath.



(*) Header screw should be tight using the supplied tool.

5. INITIAL CONFIGURATION

- One of the panels of the installation is in charge to manage the system, thus it is not necessary to assign IP addresses or to config the changes applied to each one of the devices of the installation.

To configure a panel as system manager, follow the steps:

- 

1 Access to configuration.
- 

2 Type the installer PIN code "2718" with the keypad and press validation
- 

3 Select the second option in settings menu (1/3).
- 

4 Select second option in settings menu (1/2).
- 

5 Select 5 digits dialling length. *6 digits dialling code length in the case you like to indicate the floor
- 


6 Type "1" for building number and press validation icon.
- 

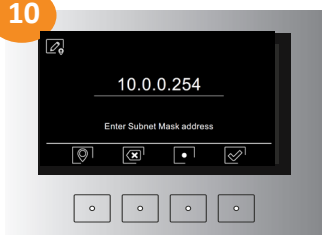
7 Type "1" for panel number and press validation icon.
- 


8 Select automatic IP assignment. In this way the system will assign to the master panel **10.0.14.9** IP address
- 


9 In this moment, panel will reboot and will be configured like manager panel.

For a **manual assignment** of the IP address, follow the same process as described above, but in step 8 choose the **Manual** mode, then follow the steps described below:

- 

9 Enter the desired IP address of the panel and press validation icon.
- 

10 Enter subnet mask and press validation icon.
- 

11 Enter Gateway address and press validation icon.
- 

12 Enter the IP Server address. It is **IP address** of the **system manager panel**.

Once all the steps have been completed, will appear the same confirmation screen as in automatic option.

In systems with general entry panels, will require to follow the same process described before, but in step 6, the number of building should be 99. The number of entry panel will run from 1 to 19 (max. number of general entry panel is 19).

It follows the explanations on how to review the registered configuration.

1

Access to configuration.

2

Type the installer PIN code
2718 with the keypad and press validate.

3

Press the right arrow button to
go to settings menu (3/3).

4

Select the fourth option.



Block and door panel number set.

(*) Check the quick guide of the monitor to know the monitor's configuration, in order to communicate with the panel.

6. ALTERNATIVE INITIAL CONFIGURATION THROUGH WEB CLIENT.

6502/G+ coded panel can be configured via its web client.

To do this, you need to connect your computer to the network.

The factory IP address of the panel is 10.0.0.254. Check that your computer network connection is in the same range. You will perform the following steps:

1 Go to network settings in control panel.

2 Change the active Ethernet network.

Network and Sharing Centre
View network status and tasks | Connect to a network | View network computers a

3 Enter into "properties".

4 Select Internet protocol IPv4.

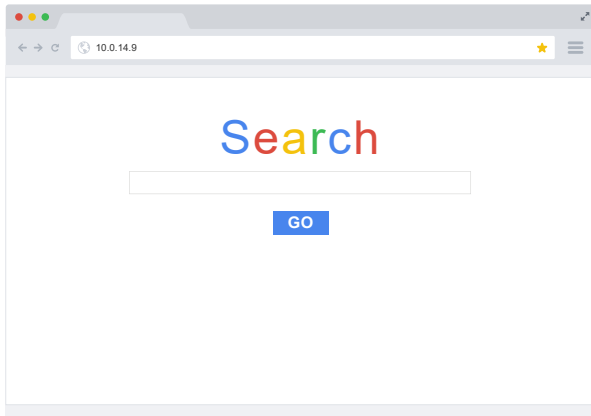
5 Set the IP range.

IP address should start by 10.
Next three numbers should have a value lower than 255.
Assign 10.0.0.1 as Gateway.

Do not assign DNS | Confirm settings.

Now the computer is configured to work in the same IP range in which the panel is located.
The only thing left to do is to:

Type the IP in the browser: **Factory IP: 10.0.0.254**

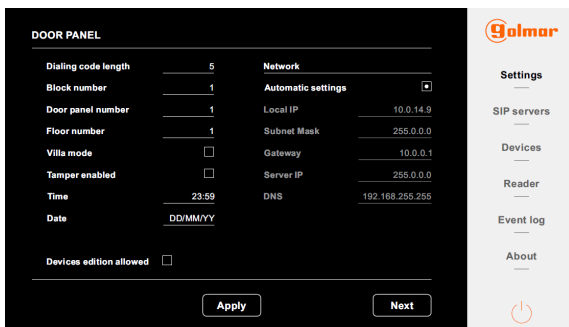


Log in to the Web Client:



The password is 888999.

Now the initial screen of the web client is described:



On this initial screen, there are various sections on the bottom right-hand side. For the system manager panel initial configuration, you only will access to the “Settings” section.

You shall set out in descending order:

- Dialing code length: 5
- Block number: 1
- Panel number: 1
- Floor number: 1

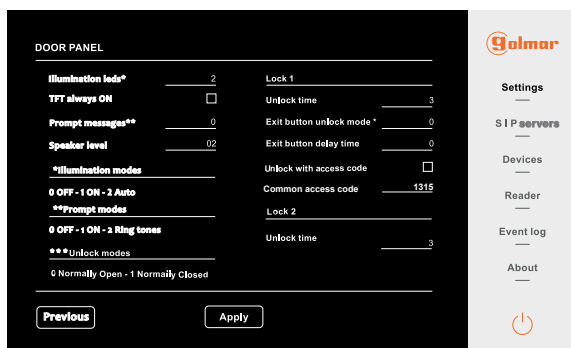
You can also activate the villa mode, the tamper, in addition to changing the date and time.

You will be able to establish panel IP address manually from this same screen.

Active the manual data input by clicking ● icon.

You must fill in the “Local IP” field with the desired panel IP address, “Subnet Mask” field with panel subnet mask, “Gateway” field with the Gateway address and “Server IP” field with the server IP address.

Remember that, in system manager panel case, the server IP address is its own IP address.



By clicking “Next” tab, you will be taken to the next screen. Here you will be able to set panel illumination modes, set whether you want to keep the panel’s TFT always on or not and set the opening time of the electric lock openers 1 and 2.

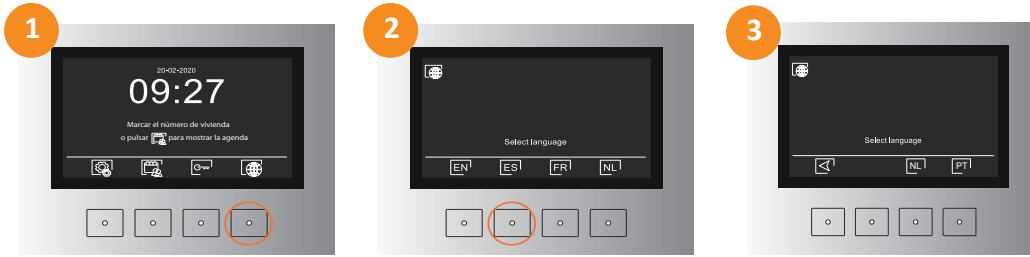
You also will be able to enable or disable prompt messages and set the language in which they are reproduced.

NOTE: For more information about web client, visit its manual.

7. SETTINGS

- Language selection.

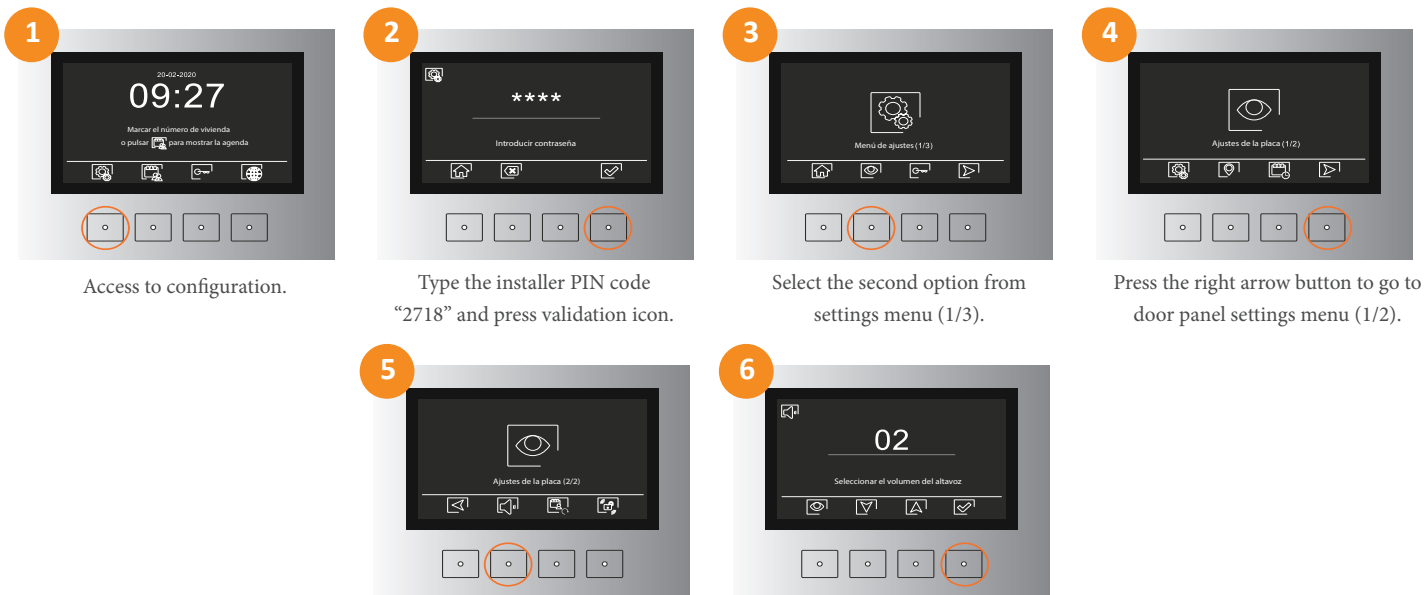
Select the language for the vocal messages and navigation menu. The available languages are English, Spanish, French, Dutch and Portuguese.



Access to languages.

Select the required one.

- Door panel volume adjustment



Access to configuration.

Type the installer PIN code "2718" and press validation icon.

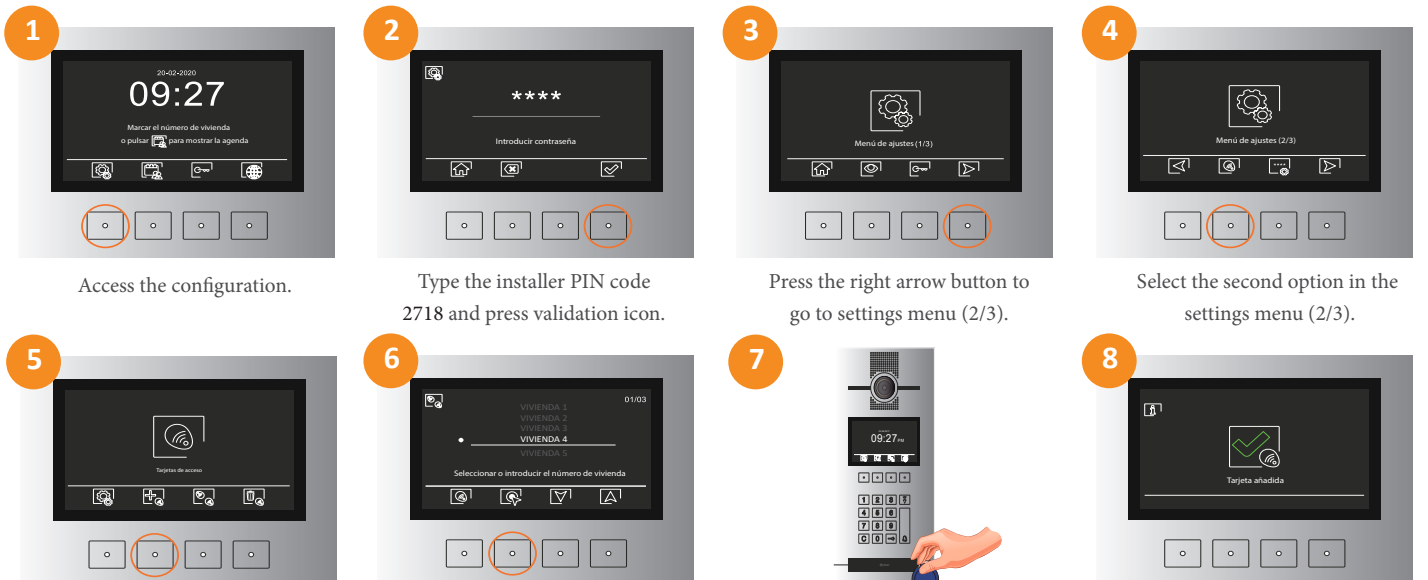
Select the second option from settings menu (1/3).

Press the right arrow button to go to door panel settings menu (1/2).

Access to volume

Adjust the volume to a level between 1-10 by using the arrows, once adjusted select the fourth option to validate it.

- RFID cards.



Access the configuration.

Type the installer PIN code 2718 and press validation icon.

Press the right arrow button to go to settings menu (2/3).

Select the second option in the settings menu (2/3).

Select the second option, access cards.

Select the apartment to which associate the access cards, once selected press the validate button.

Swipe the cards which you like to link to this apartment.

A maximum of 5 cards per apartment can be

Once the card has been added, a confirmation tone will be emitted. The screen will display "card added".

(*) It is possible to delete or transfer the cards to other panels. To proceed, select the option  or  in the step 5.

8. SYSTEM OPERATION



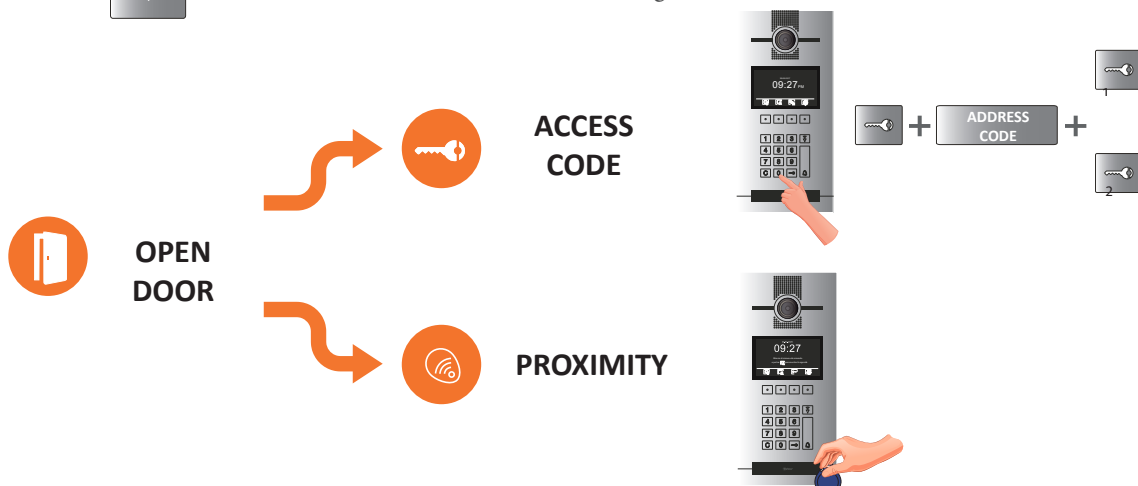
The call process lasts for a maximum of 45 seconds. The panel will prompt the voice message "call is in progress" and will display that message on screen. If after 45 seconds the call has not been answered, it will indicate "No response, try it later".



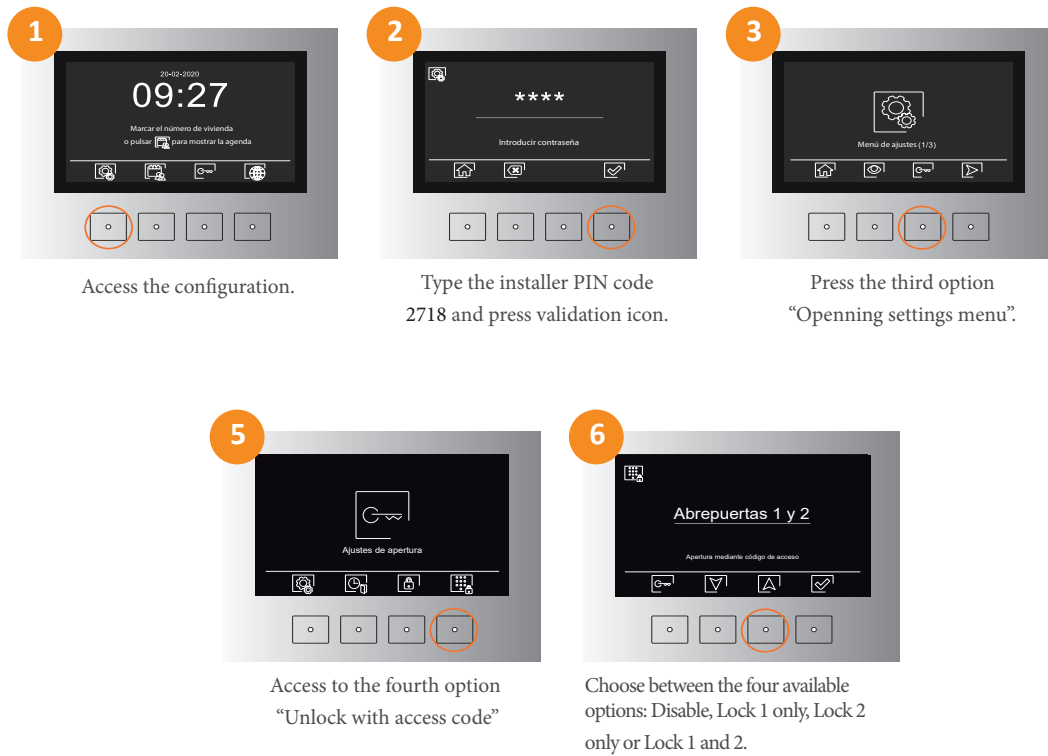
The communication process lasts for a maximum of 90 seconds. From the time that the monitor picks up the call, the panel will display "In communication". Once the communication is finished, the panel will prompt a voice message "Communication is finished" and will display that message on screen.



(*) The push button  allows to make a direct call to the available guard units.



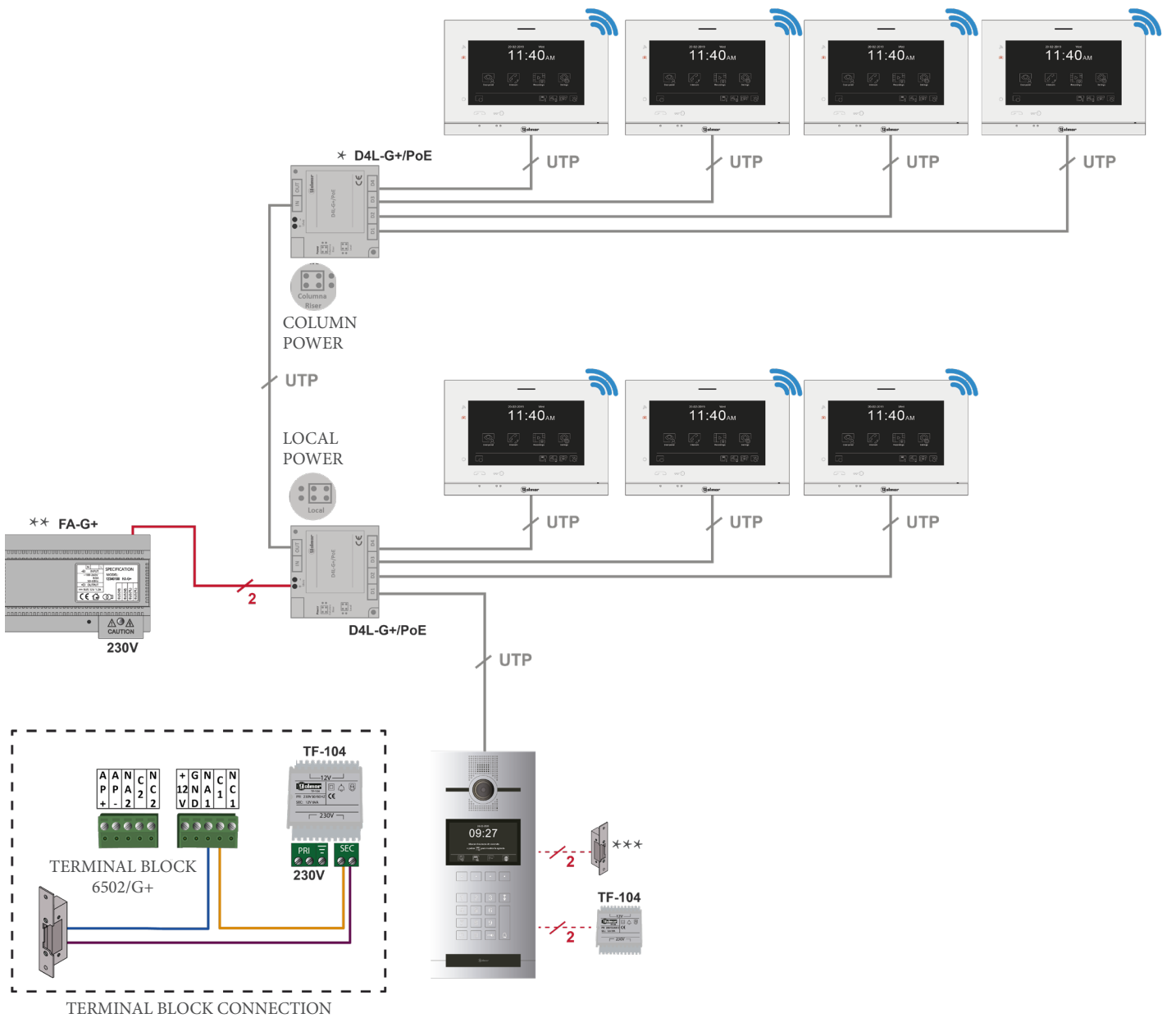
We can choose which door opener enable through the opening code entering, access card presentation or in a call process between the door panel and the monitor in the next way:



During a door release process, the panel will display on screen "Door is open".



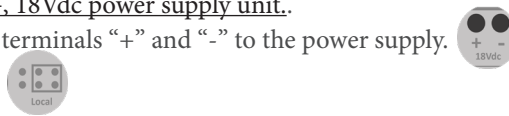
9. INSTALLATION DIAGRAM



* Power up the D4L-G+/POE switches with the FA-G+, 18Vdc power supply unit.

Each switch can be powered locally, by connecting the terminals “+” and “-” to the power supply.

The Jumper position of the switch must be as follow:



It can be also powered through the riser from OUT terminal at the switch placed just before . The position of the jumper should be as follows:



** The maximum distance between the power supply and more distant device is 70m.

The maximum number of devices powered with each FA-G+ is 8 monitors or 4 entry panels.

It is required one power supply FA-G+ for every 8 devices.

*** The door lock to be connected could be an AC lock (AC transformer will be necessary, recommended TF-104) or a DC lock (DC power supply will be necessary, recommended HRF-12/1,25A).



C/ Silici 13. Poligon Industrial Famadas
08940 – Cornellà del Llobregat – Spain
golmar@golmar.es
Telf: 934 800 696
www.golmar.es

Golmar reserves the right to make any changes without prior notice.